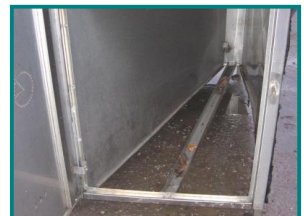


# J SHARPLES

PLANT, MACHINERY, VEHICLE SALES AND MORE...

## DIRECT COUNCIL STAINLESS STEEL 2no BIKE STORE CABINET



**£750.00**

2 BIKE STORE - CABINET ,TOP QUALITY, FULLY STAINLESS STEEL.... DIRECT COUNCIL...

APPROX DIMENSIONS .... 1900 mil LONG X 1000 mil WIDE X 1300 mil HIGH

Product Details	
Category/Type	Equipment / MISC
Make	DIRECT COUNCIL
Model	STAINLESS STEEL 2no BIKE STORE CABINET
Year	-
Hours	-

Bannastres Bank Farm, Nook Lane, Bamber Bridge, Preston, Lancashire, PR5 6BD

Tel: 01772 628644 Mob: 07860559578

[www.jsharples.co.uk](http://www.jsharples.co.uk) [john.sharples@ic24.net](mailto:john.sharples@ic24.net)